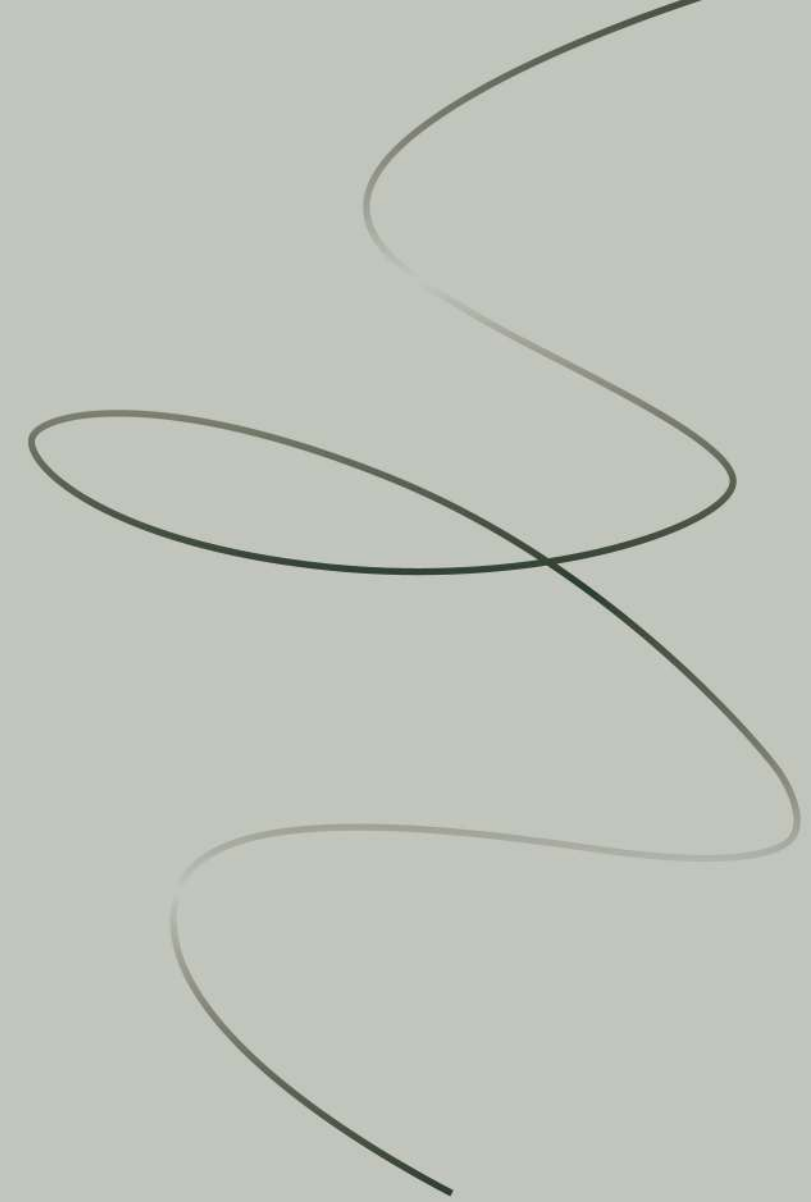


DGM VISION

BROCHURE





DGM VISION

A MASTERPIECE OF MODERN DESIGN

TABLE OF CONTENT

Message From Our CEO	1
Investing in Dubai's vision 2040	2
The Dubai Experience	4
Location and Landmarks	10
Welcome to DGM Vision	18
Welcoming Reception	20
Your Space Matters	22
Building Management Facilities	34

Smart Home Facilities	36
Air Quality Control	38
DGM Vision Lifestyle	40
DGM Vision Amenities and Facilities	42
DGM Vision Community	44
DGM Vision Renders	54
Building Materials	84
Floorplans	86



MESSAGE FROM OUR CEO

We chose to create spaces that families would truly appreciate living in. Our approach prioritizes generous space reminiscent of our ancestors' dwellings, yet infused with the modern sophistication of today.

DGM investment & Vision is more than just two company; they represents innovation, unwavering commitment, and Emirati excellence. Through our vertically integrated real estate development platform, our legacy extends beyond mere bricks and mortar. It is crafted from visionary concepts, meticulous planning, and flawless execution.

INVESTING IN DUBAI'S DGM VISION 2040

Investing in Dubai is an enticing opportunity for savvy investors and potential residents. Known for its exceptional safety, competitive property prices, and thriving economy, Dubai shines as a global beacon of opportunity. Its reputation for high capital appreciation and a business friendly environment makes it the top choice in the region for ease of doing business, offering a supportive platform for entrepreneurial ventures and investment growth.

Additionally, the absence of personal income tax and the attractive long-term residency options through the Golden Visa program enhance its appeal. Strategically located as a global business hub with excellent worldwide connectivity, Dubai offers a lifestyle enriched by worldclass amenities and cultural diversity. Embrace a prosperous future and elevate your living standards by investing in the dynamic and vibrant city of Dubai.

TAX

You don't pay any income Tax

INVESTING IN DGM VISION

Allows you to obtain two years renewable residence permit

POPULATION GROWTH

Dubai's Vision 2040 aiming for 5.4M

100% BUSINESS OWNERSHIP

Applicable for all commercial companies

GREENER DUBAI

Greener Dubai and Recreational space double in size

EASE OF INVESTMENT

High regulated market

LUXURY UNLEASHED THE DUBAI EXPERIENCE

Discover the stunning elegance of Dubai, where sophistication and beauty shine in every corner. Dubai captivates with its luxury, offering pristine beaches and excellent facilities for a top-notch lifestyle. Here, the extraordinary is normal, with wonders like the grand Burj Khalifa. Enjoy vibrant nightlife, rich culture, and unique shopping experiences. In Dubai, luxury is a part of everyday life. promising a world of exquisite living.









LOCATION AND LANDMARKS

Designed for the sophisticated urban dweller, DGM Vision redefines luxury living in Jumeirah Garden City, Dubai. Nestled on the prestigious Sheikh Zayed Rd, this prime location places you step away from Eden House Apartment, Dubai Financial Center, Museum of the future, Burj Khalifa, Dubai Mall, City Walk, Jumeirah Beach, and more, offering unparalleled convenience.

DUBAI, UNITED ARAB EMIRATES

Museum of Future
5 minutes

Down Town
5 minutes

Burj Khalifa
5 minutes

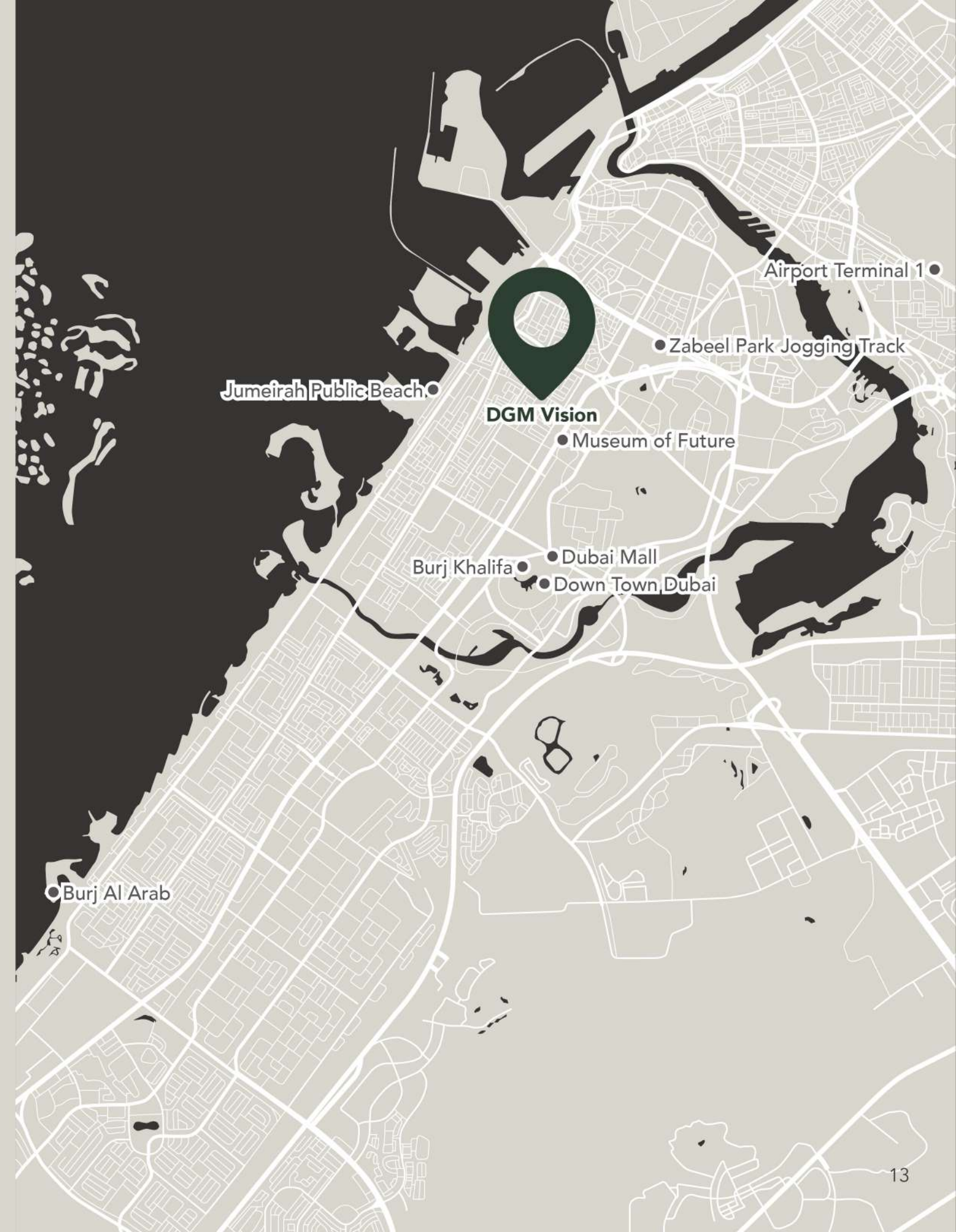
Dubai Mall
7 minutes

Zabeel Park Jogging Track
9 minutes

Jumeirah Public Beach
10 minutes

Airport Terminal 1
13 minutes

Burj Al Arab
20 minutes





DISCOVER DUBAI JUMEIRAH GARDEN CITY

The Jumeirah Garden City area boasts a prime urban location and is renowned for its high-end residences, top-quality amenities, and beautiful natural environment. Residents here enjoy convenient transportation and abundant living resources while experiencing the tranquility and beauty of a garden-like setting. The properties in this area have significant appreciation potential, making it a popular choice for investors. Jumeirah Garden City is a high-end community that perfectly blends a superior location, luxurious living, and cultural diversity, making it an ideal place for both living and investment.

THE KING OF COST-PERFORMANCE, YOUR BEST CHOICE.

JUMEIRAH GARDEN CITY PROPERTY PRICES

DIFC

4000 AED / Sfqt +

CITY WALK

4000 AED / Sfqt +

DGM VISION

Coming Soon



DISCOVER DUBAI JUMEIRAH
GARDEN CITY

DGM VISION

Welcome to DGM Vision, where every corner invites you to explore the essence of vibrant lifestyle. With modern amenities seamlessly integrated into the community, experience a harmonious blend of comfort and convenience. Embrace the opportunity to live, thrive, and indulge in the true essence of Dubai at DGM Vision.



DGM VISION

ENTRANCE

PARKING

YOUR SPACE MATTERS. SPACE IS WHAT WE NEED IN TODAY'S CONGESTED LIFE

Studies indicate that spacious living environment positively impact health by providing more natural light, improving air quality, and offering space for physical activity, which enhances mental and physical well-being.

[SOURCE]
JOURNAL OF ENVIRONMENTAL PSYCHOLOGY

FLOOR-TO-FLOOR WINDOWS

Floor to floor windows, bringing in more natural light

ELEVATED CEILINGS

High ceilings, at 3.5 meters. Our ceiling height is higher than the average

180° OPEN VIEWS

Our apartments offer 180° open views, connecting residents to a breathtaking panorama of natural landmarks, enhancing your home with beauty and tranquility





PREMIUM FURNISHING AT EVERY STEP

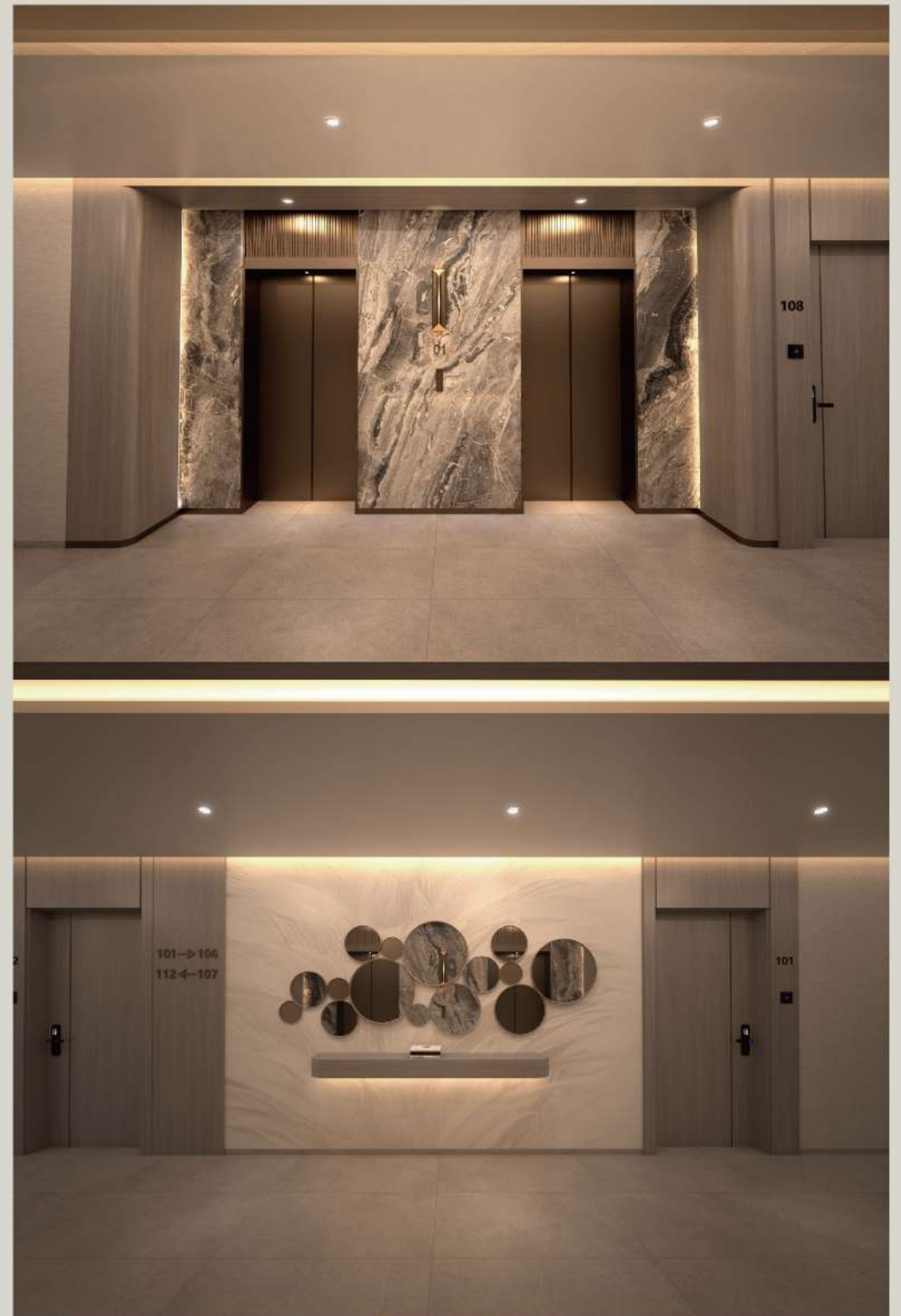
From intricately tiled corridors to elegantly finished walls, our commitment to premium quality shines through at every step. Each element of our design has been carefully selected and crafted to ensure a luxurious living experience.





DGM VISION

DGM VISION



WE ARE RIGHT WHERE YOU ARE

At DGM Vision, you will be able to communicate with your community and building management in various ways. You can call our toll-free number, contact us via our 24/7 WhatsApp line, or use the app and portal to process your requests.

Smooth Move in and Move out

Hassle-free process for your move-ins and move-outs.

Work Permits and NOC's

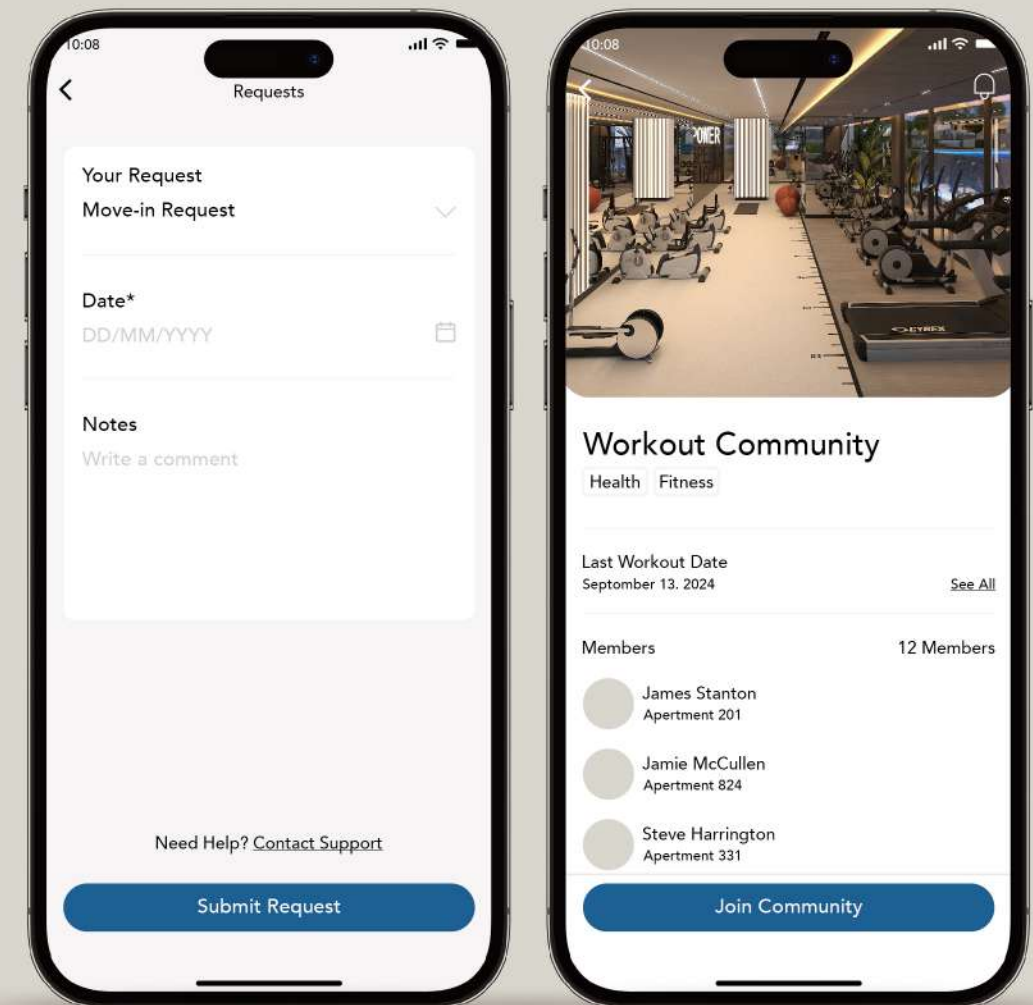
Apply for work permits and NOCs easily.

Engage with the Community

Engage with the community on the community wall.

Track your Requests

Effortlessly track the status of your requests.



FULLY AUTOMATED SMART HOME

Our residences are equipped with Smart thermostats and smart door locks for automated comfort and security. You can enhance your living experience by adding other compatible Smart Home devices, allowing for a personalized and integrated smart home setup.



ELEVATING EVERY CORNER OF YOUR LIVING SPACE

At DGM Vision, we've taken your well-being to heart by installing air quality monitoring sensors. Breathe easy knowing that the air you inhale is clean and healthy, promoting a better lifestyle for you and your family.

AIR QUALITY MONITORING SYSTEM

Installing air quality sensors in buildings can significantly enhance resident health by continuously monitoring and managing indoor air conditions, reducing pollutants and ensuring optimal air quality.

[SOURCE]
Building and Environment Journal





THIS IS NOT JUST A BUILDING IT'S A LIFESTYLE

CONCIERGE SERVICE

At DGM Vision, we understand that true luxury encompasses more than just yormal amenities; It's about personalized attention and seamless convenience. That's why our dedicated concierge team is committed to supporting and assisting all residents with their every need, ensuring lifestyle of unparalled comfort and ease.

ON DEMAND HOUSE KEEPING SERVICE

Experience the epitome of convenience and care with on-demand housekeeping service. Tailored for the discerning, our housekeeping ensures your home remains a pristine sanctuary.

ON DEMAND DAY CARE SERVICE

Concurrently, on demand daycare offers a nurturing environment for your little ones, blending educational activities with fun in a secure setting. Together, they symbolize our dedication to enhancing your lifestyle and peace of mind.

BUILDING FEATURES AND AMENITIES

At DGM Vision, every day is a delight filled with relaxation and joy, offering a life of unparalleled comfort with world-class amenities and dedicated services. Start your mornings with a boost of energy in our state-of-the-art gym, featuring the latest fitness equipment and personalized workout sessions tailored to your needs. Unwind by the pool in the afternoon, surrounded by the sounds of laughter and family fun as you soak up the sun in a serene environment. As evening falls, savor breathtaking panoramic views from our rooftop terrace, relaxing and taking in the stunning sunsets or the twinkling city lights.

With everything you need for enjoyment and relaxation at your fingertips, including a luxurious pool and fully equipped gym, our dedicated team ensures seamless living with meticulously maintained facilities and personalized services. Welcome to a lifestyle focused on luxury and ease, where your comfort and satisfaction are our top priorities. Embrace the joy of living at DGM Vision, where every detail is designed to enhance your experience.





STEP INTO A WORLD OF POSSIBILITIES

Welcome to our state-of-the-art gym, where every workout is a step towards becoming your best self. Our fitness center is equipped with the latest machines and designed for your ultimate comfort, creating an environment that encourages you to push your limits and achieve your wellness goals. Whether you are a beginner or a seasoned fitness enthusiast, our gym offers a comprehensive experience that nurtures your body, mind, and spirit.



SPLASH AND SERENITY

DGM Vision's private pool is not merely a swimming area; it's an oasis of tranquility where luxury meets leisure. This exclusive aquatic haven is designed for those who desire more than just a dip.

Featuring cutting-edge amenities and a serene ambiance, it offers an inviting space to relax and rejuvenate. Whether you're an avid swimmer or someone seeking a peaceful retreat, DGM Vision's pool is a place where wellness is embraced with elegance, providing an elevated experience for residents to enjoy their aquatic pursuits with grace and sophistication.









LUXURY CORRIDORS REDEFINED

Luxury corridors set new standards for high-end living and business environments. These spaces combine elegance and practicality with premium finishes, modern technology, and custom furnishings. Found in residences, luxury hotels, and top-tier office buildings, they enhance visual appeal while ensuring convenience and accessibility.

Their strategic layout and design reflect a commitment to quality, making every passage through them a truly luxurious experience.

SUPERIOR CRAFTSMANSHIP IN EVERY DETAIL

Our dedication to premium quality is evident in every detail of our spaces, from the intricately tiled corridors to the elegantly finished walls. Each element is meticulously crafted to reflect our high standards, ensuring a sophisticated and luxurious environment.



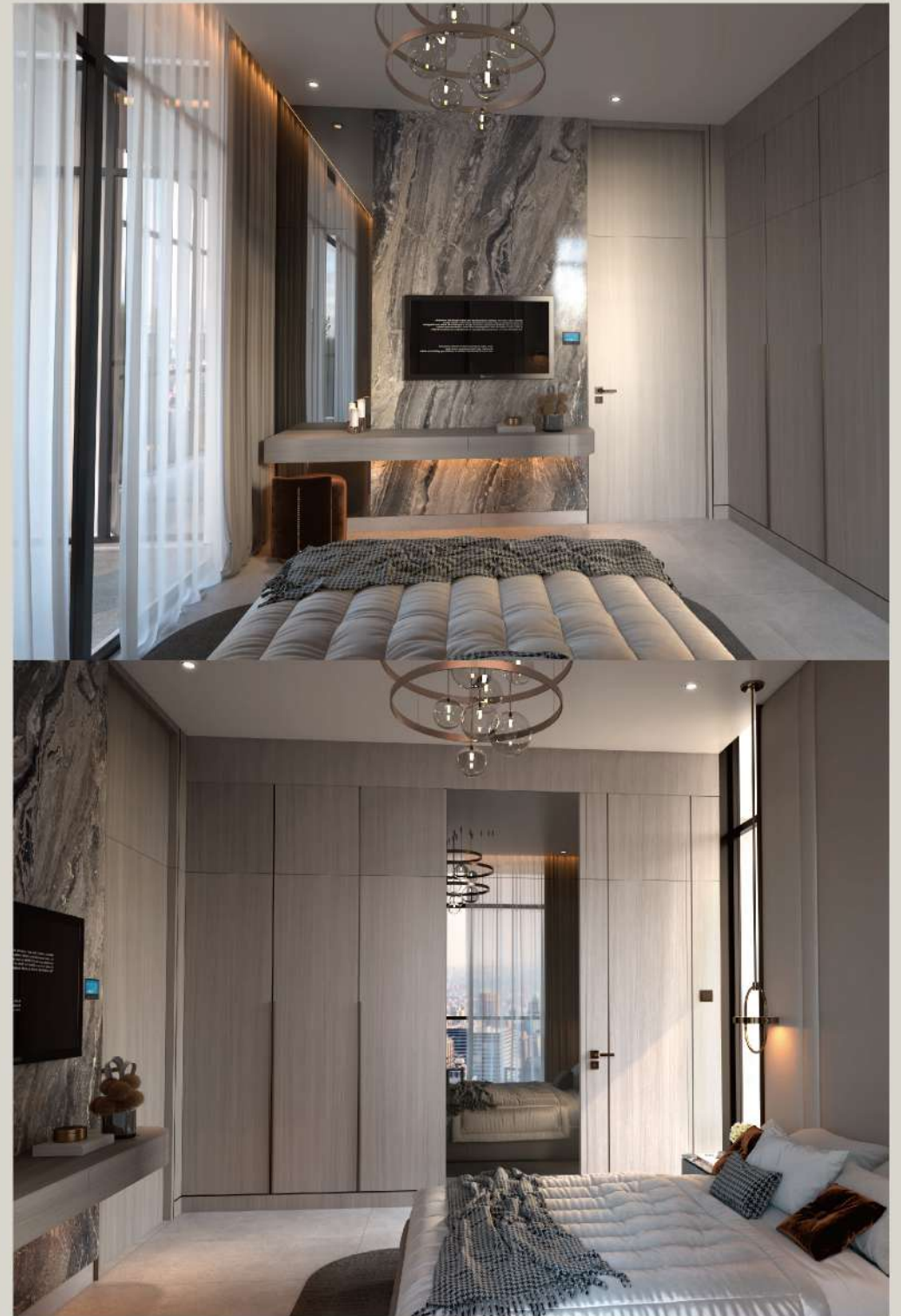
















THE PINNACLE OF MODERN LIVING

Experience the superior craftsmanship of DGM Vision, where every element is constructed with the highest quality materials. The attention to detail in every aspect, from the soundproof walls to the energy-efficient lighting, guarantees a space that is not only stunning but also built to endure.













EXTERNAL
WOODEN DOOR



INTERNAL
WOODEN DOOR



PORCELAIN
FLOORING



SMART
LOCK



BATHROOM
PORCELAIN



BATHROOM
PORCELAIN



WALL
PAINT



SMART AC
THERMOSTAT



TRAVERTINE PORCELAIN
FLOORING



ELECTRICAL
APPLIANCES



QUARTZ
COUNTERTOPS



SANITARYWARE
BAGNODESIGN

ALL THE MATERIALS ARE CRAFTED WITH EXCELLENCE BUILT TO LAST

Crafted with the finest high-end materials, our luxury apartments promise unparalleled durability and elegance. Enjoy a home where quality and beauty seamlessly blend, providing you with a sanctuary of style and strength.

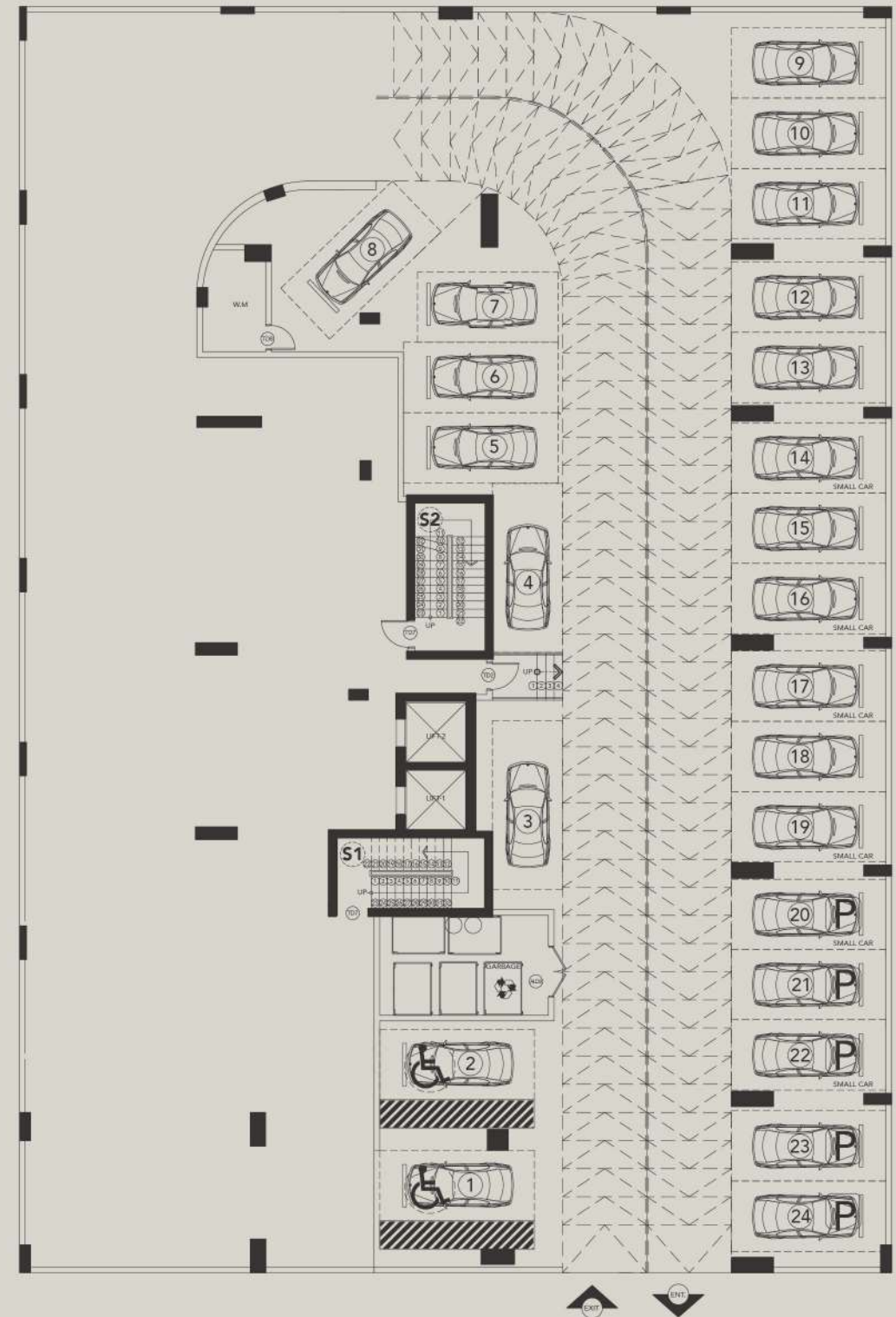
DGM VISION FLOOR LAYOUT

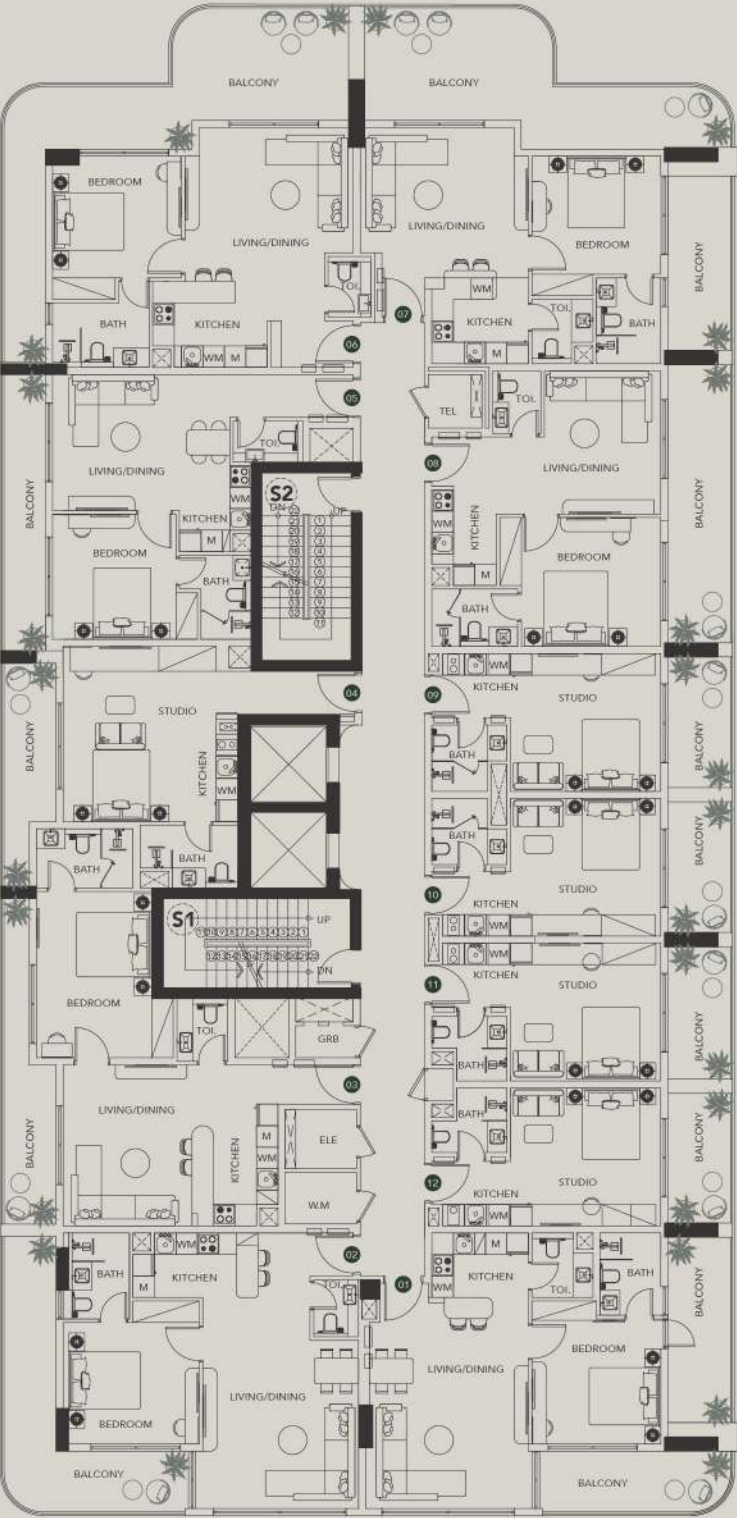
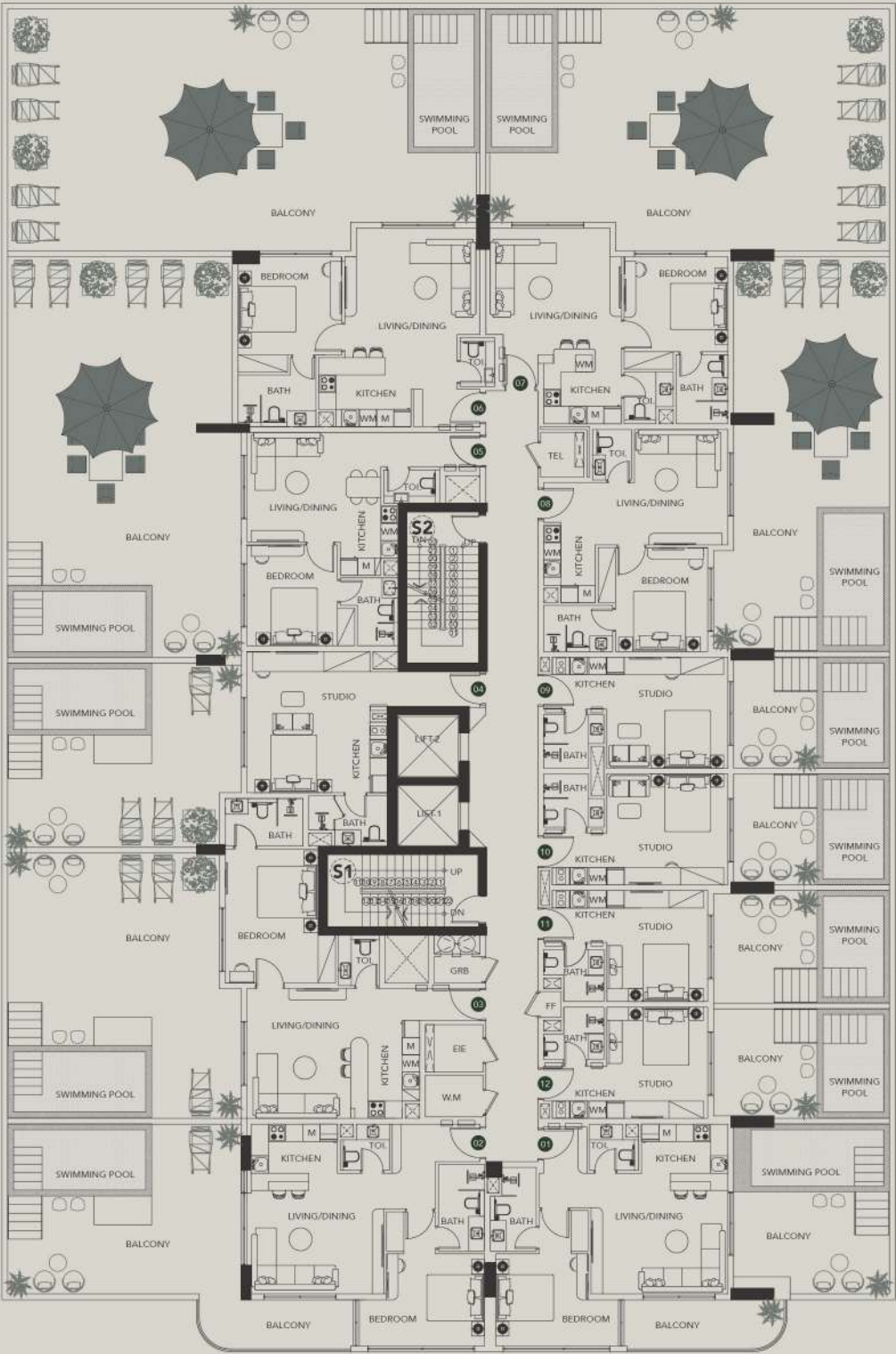
DGM Vision is shaping DGM Vision with a clear vision: to offer more than just residences. DGM Vision is a testament to our commitment to providing a seamless blend of luxury and city living. Our goal is to create spaces that transcend convenience, inviting residents to explore and enjoy the beauty of Dubai effortlessly.

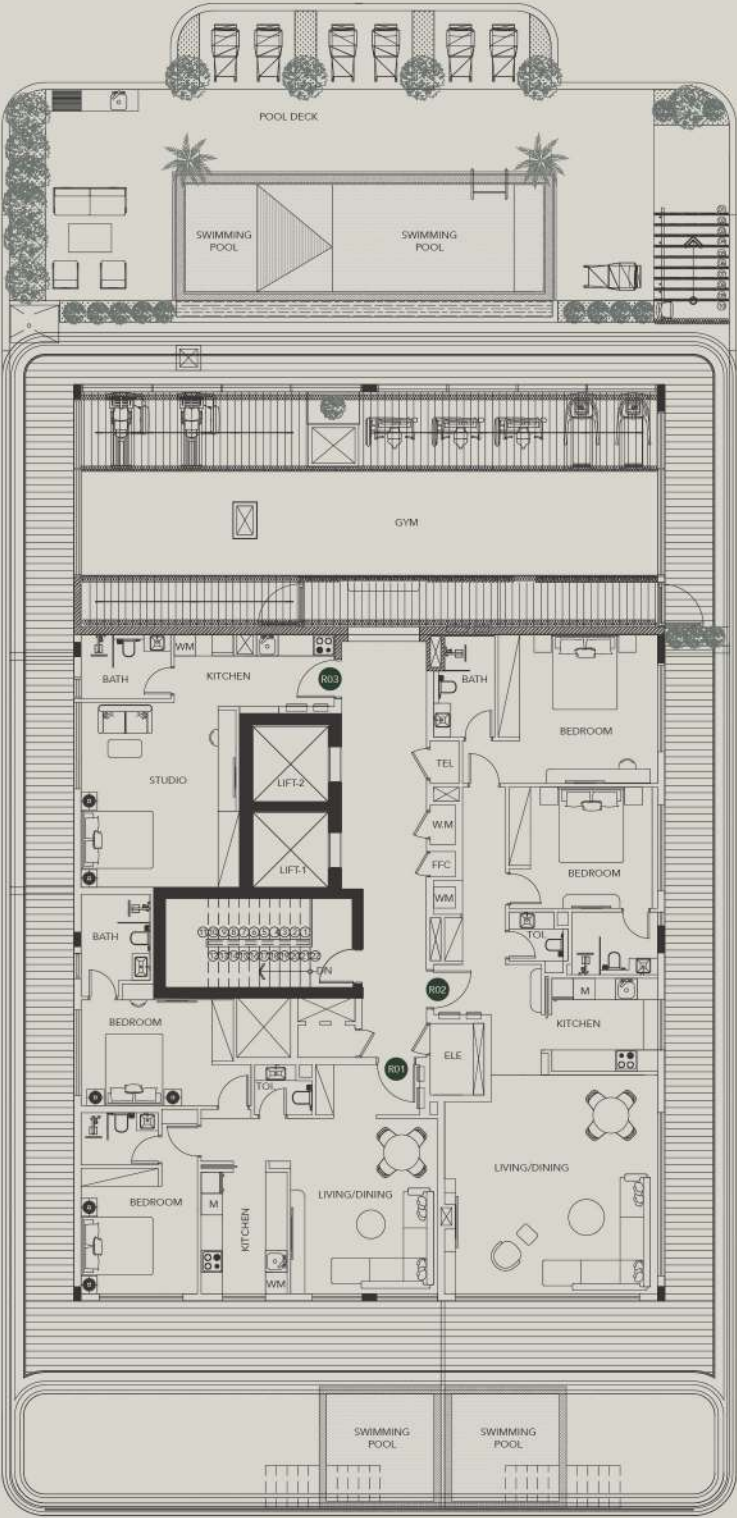
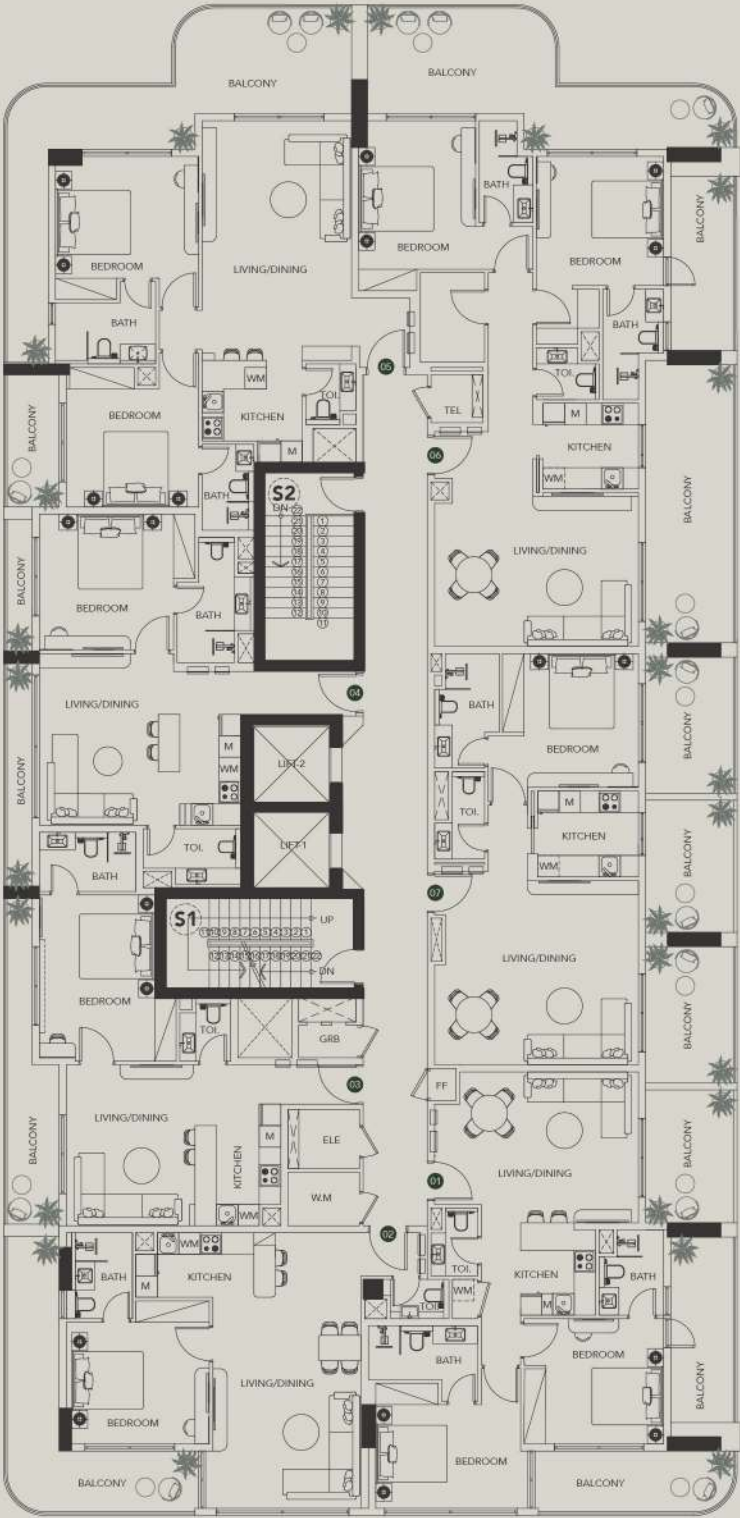
Every detail of DGM Vision is designed to enhance the living experience. The ground floor features ample parking, reception area, creating a serene oasis. Floors 1 to 7 offer stylish studios and 1 bedroom apartments, while the 8th floor offers 1 bedroom and is dedicated to spacious 2 bedroom units. Rooftop boasts a communal swimming pool and a fully-equipped gym, ensuring residents have access to premium amenities.

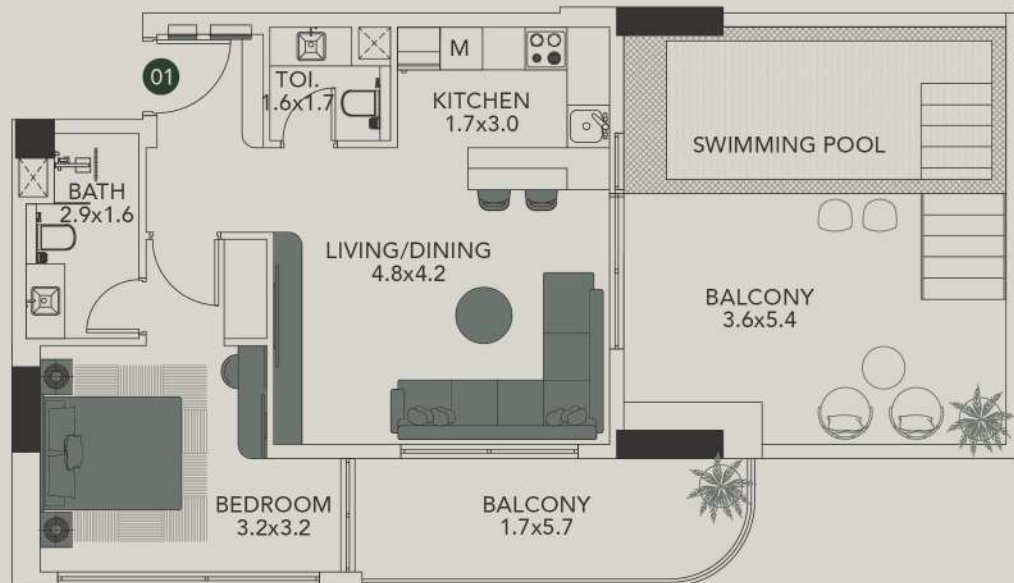
DGM Vision is more than a home; it's an invitation to experience the vibrant and captivating essence of this remarkable city. Discover a residence that harmonizes convenience, sophistication, and the true spirit of Dubai living.











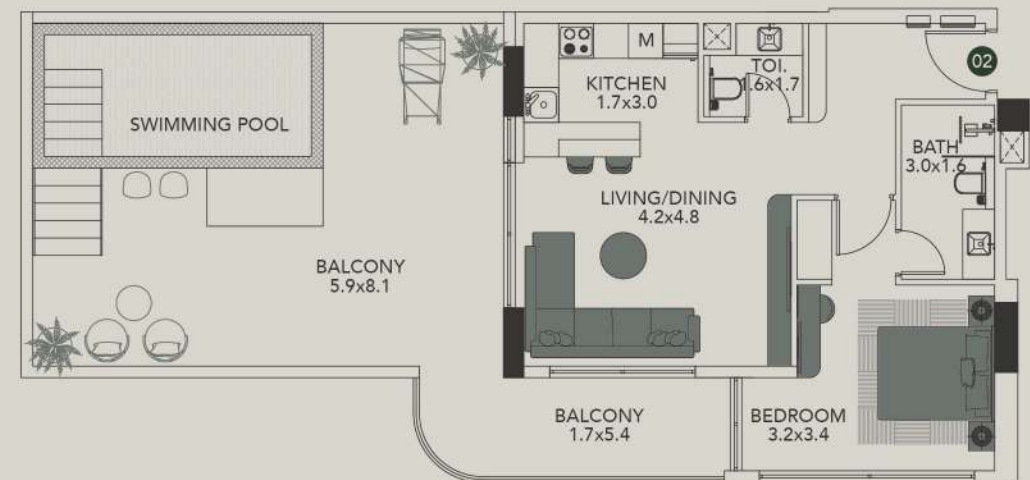
Unit-101
1 Bedroom

Internal Living Ared
603.32 sq.ft.

Level
01

Outdoor Living Area
475.87 sq.ft.

Total Living Area
1079.19 sq.ft.



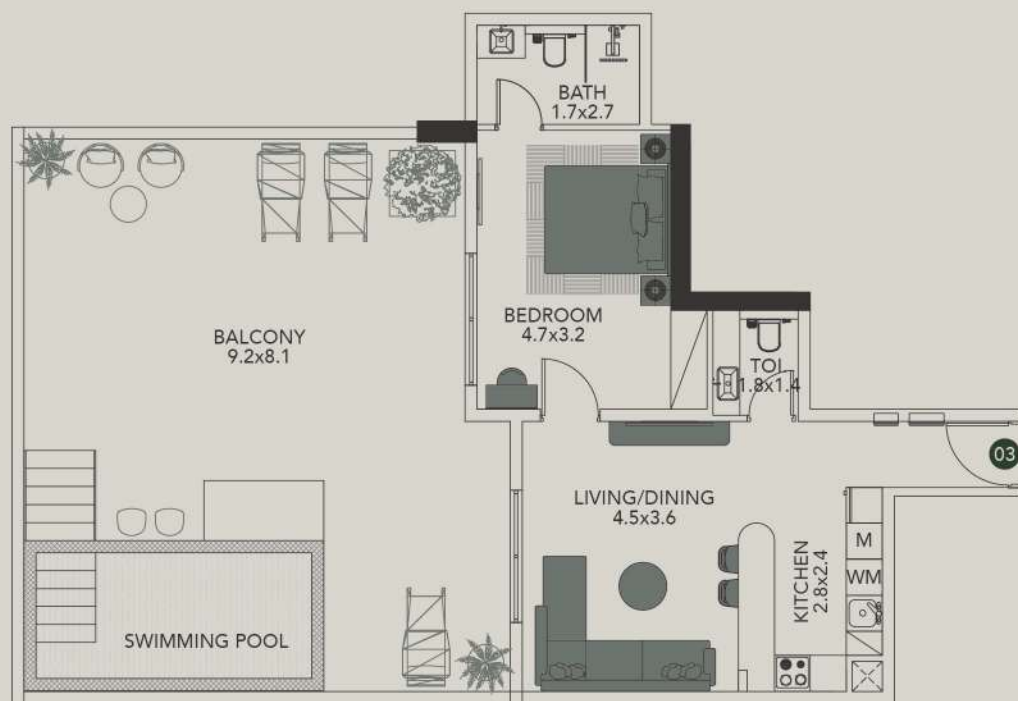
Unit-102
1 Bedroom

Internal Living Ared
640.45 sq.ft.

Level
01

Outdoor Living Area
651.54 sq.ft.

Total Living Area
1291.99 sq.ft.



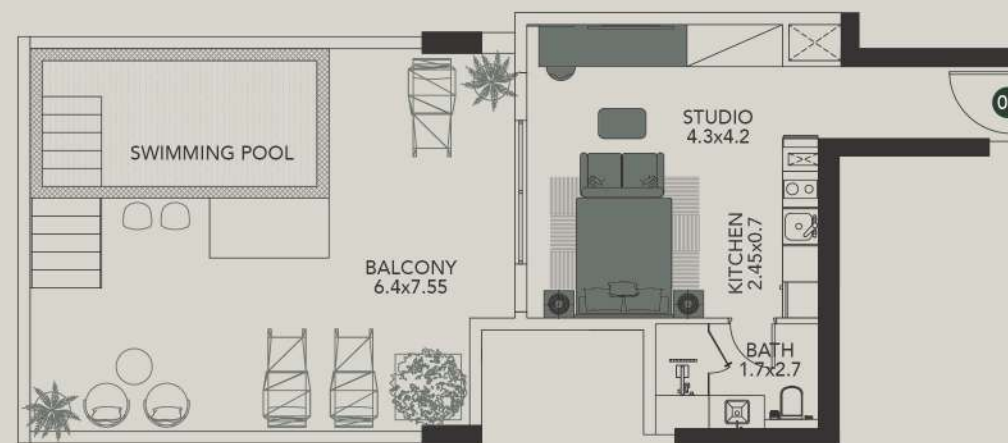
Unit-103
1 Bedroom

Internal Living Ared
616.13 sq.ft.

Level
01

Outdoor Living Area
802.13 sq.ft.

Total Living Area
1418.25 sq.ft.



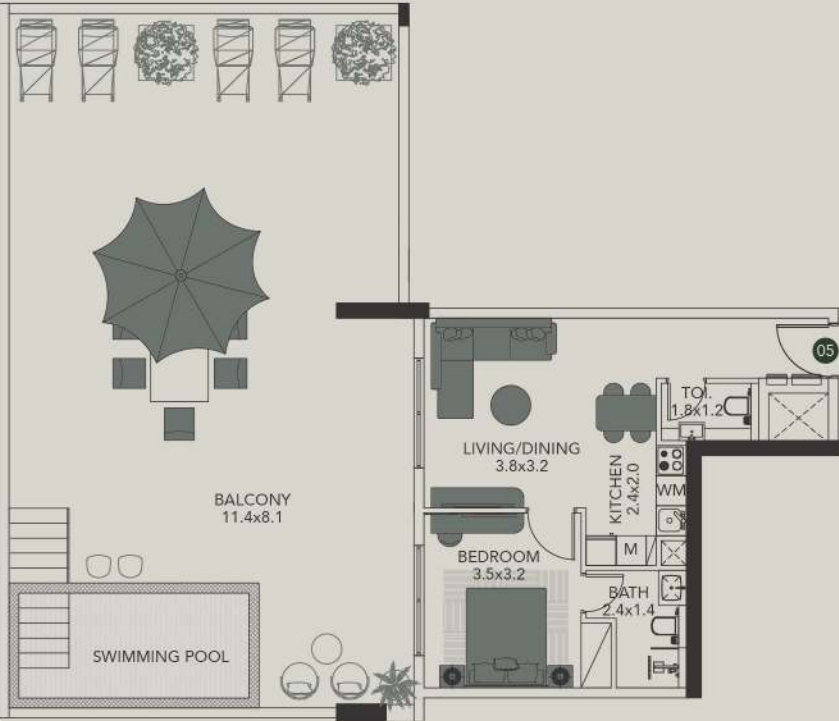
Unit-104
Studio

Internal Living Ared
387.78 sq.ft.

Level
01

Outdoor Living Area
573.93 sq.ft.

Total Living Area
952.71 sq.ft.



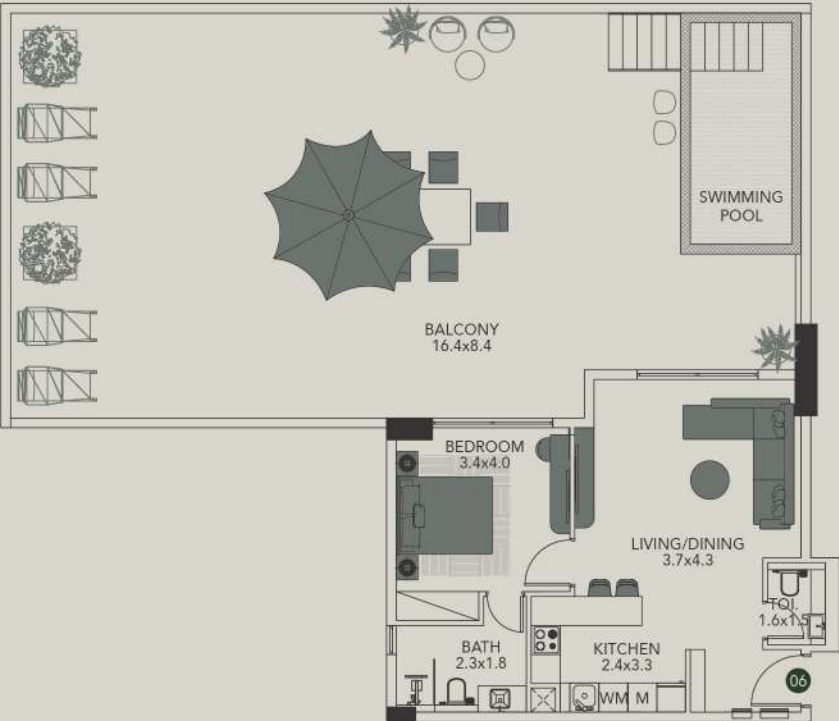
Unit-105
1 Bedroom

Internal Living Ared
508.06 sq.ft.

Level
01

Outdoor Living Area
1240.33 sq.ft.

Total Living Area
1748.38 sq.ft.



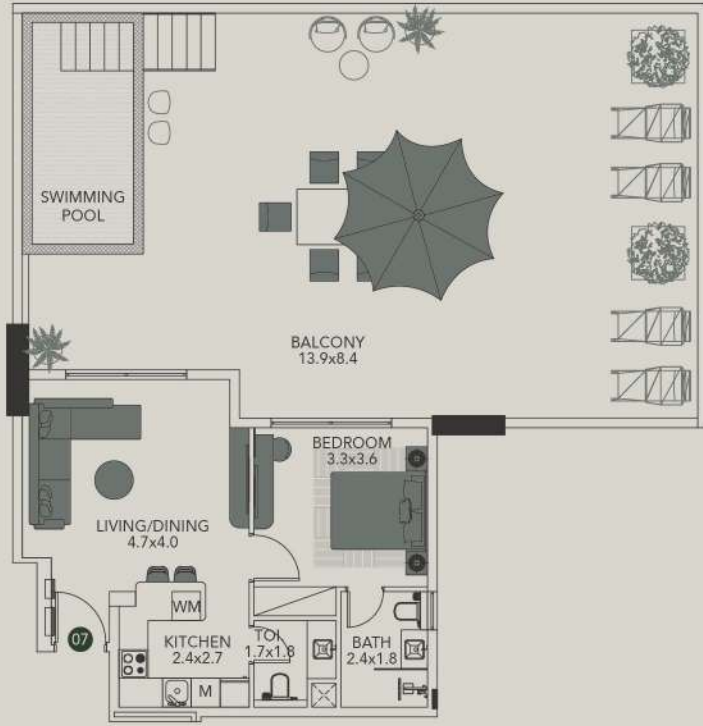
Unit-106
Studio

Internal Living Ared
618.28 sq.ft.

Level
01

Outdoor Living Area
1489.40 sq.ft.

Total Living Area
2107.68 sq.ft.



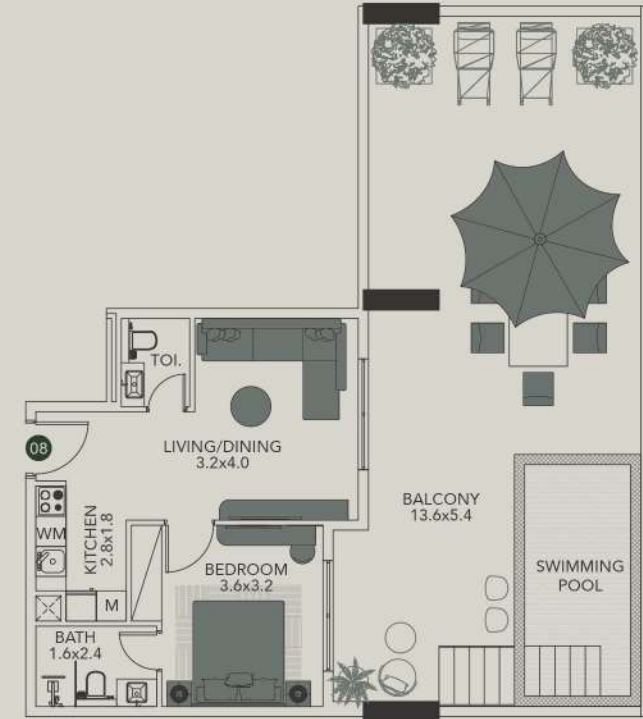
Unit-107
1 Bedroom

Internal Living Ared
561.12 sq.ft.

Level
01

Outdoor Living Area
1266.48 sq.ft.

Total Living Area
1827.60 sq.ft.



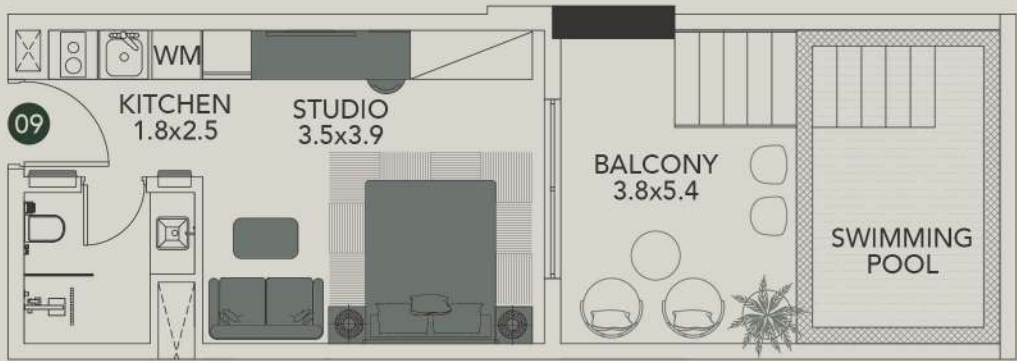
Unit-108
Studio

Internal Living Ared
496.32 sq.ft.

Level
01

Outdoor Living Area
864.66 sq.ft.

Total Living Area
1360.99 sq.ft.



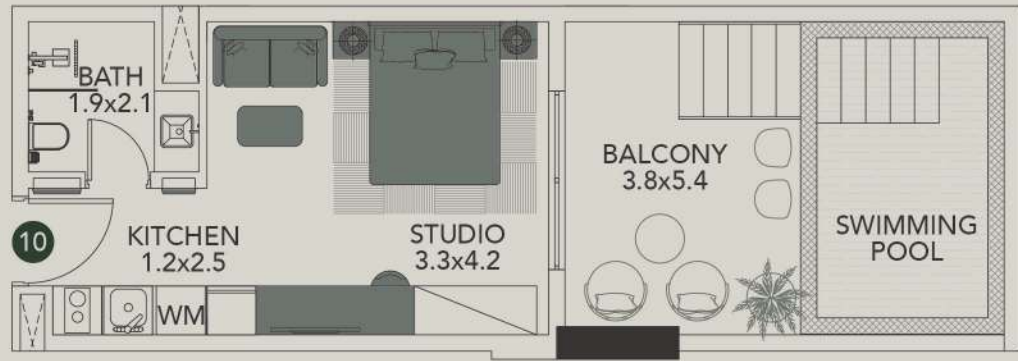
Unit-109
Studio

Internal Living Ared
280.29 sq.ft.

Level
01

Outdoor Living Area
244.02 sq.ft.

Total Living Area
524.31 sq.ft.



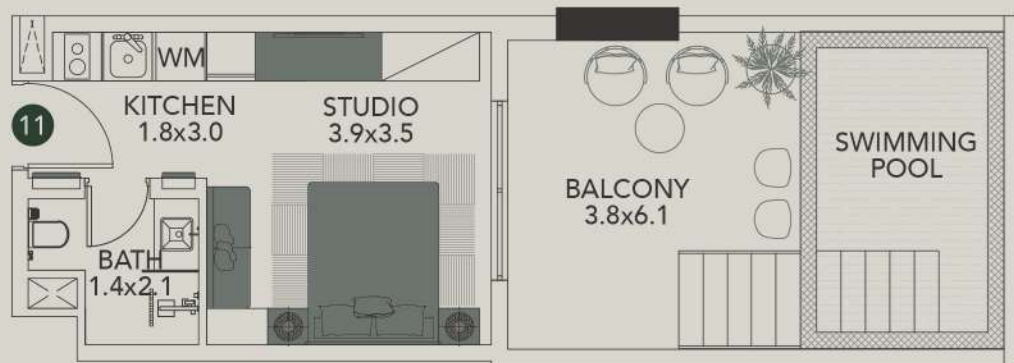
Unit-110
Studio

Internal Living Ared
280.29 sq.ft.

Level
01

Outdoor Living Area
244.13 sq.ft.

Total Living Area
524.42 sq.ft.



Unit-111
Studio

Internal Living Ared
246.92 sq.ft.

Level
01

Outdoor Living Area
277.60 sq.ft.

Total Living Area
524.53 sq.ft.



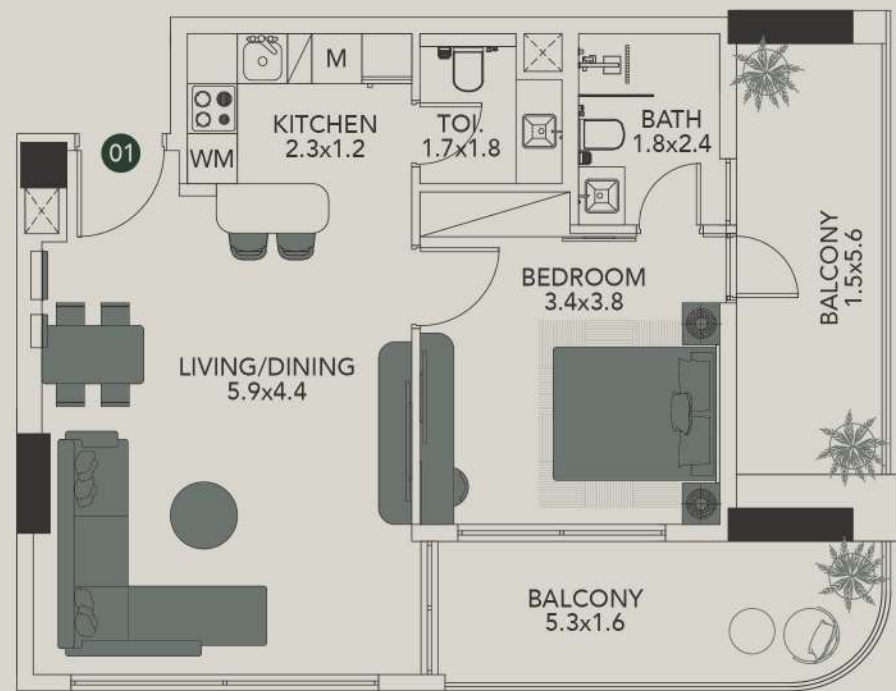
Unit-112
Studio

Internal Living Ared
247.57 sq.ft.

Level
01

Outdoor Living Area
271.25 sq.ft.

Total Living Area
518.82 sq.ft.



Unit-201
1 Bedroom

Internal Living Ared
611.17 sq.ft.

Level
02

Outdoor Living Area
226.58 sq.ft.

Total Living Area
837.76 sq.ft.



Unit-202
1 Bedroom

Internal Living Ared
643.04 sq.ft.

Level
02

Outdoor Living Area
205.91 sq.ft.

Total Living Area
848.95 sq.ft.



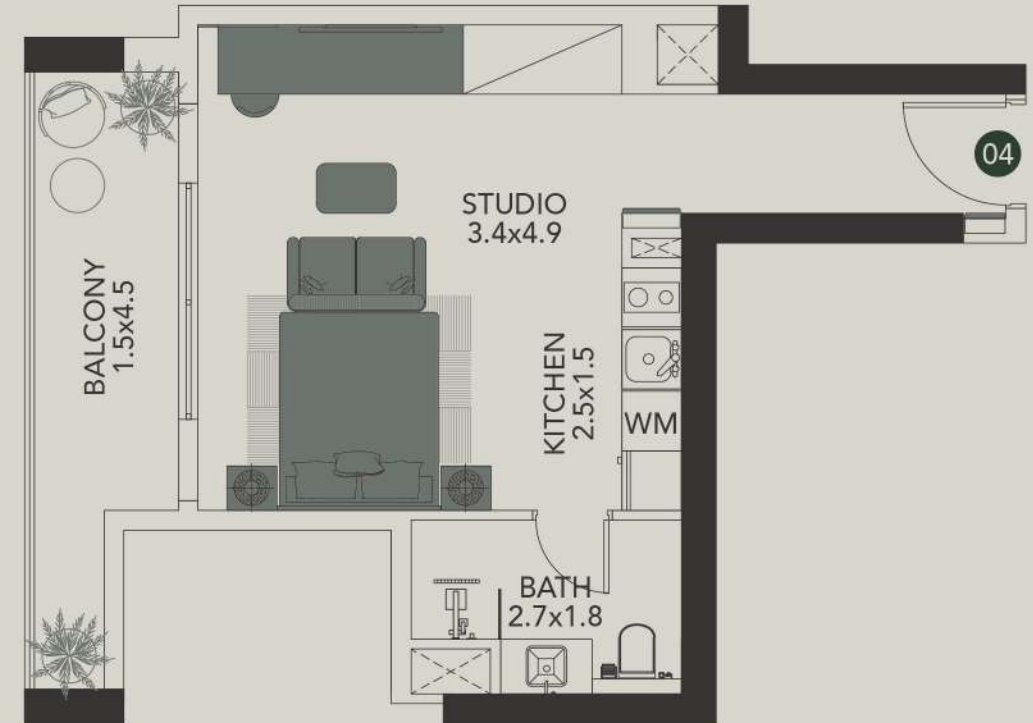
Unit-203
1 Bedroom

Internal Living Ared
616.13 sq.ft.

Level
02

Outdoor Living Area
121.63 sq.ft.

Total Living Area
737.76 sq.ft.



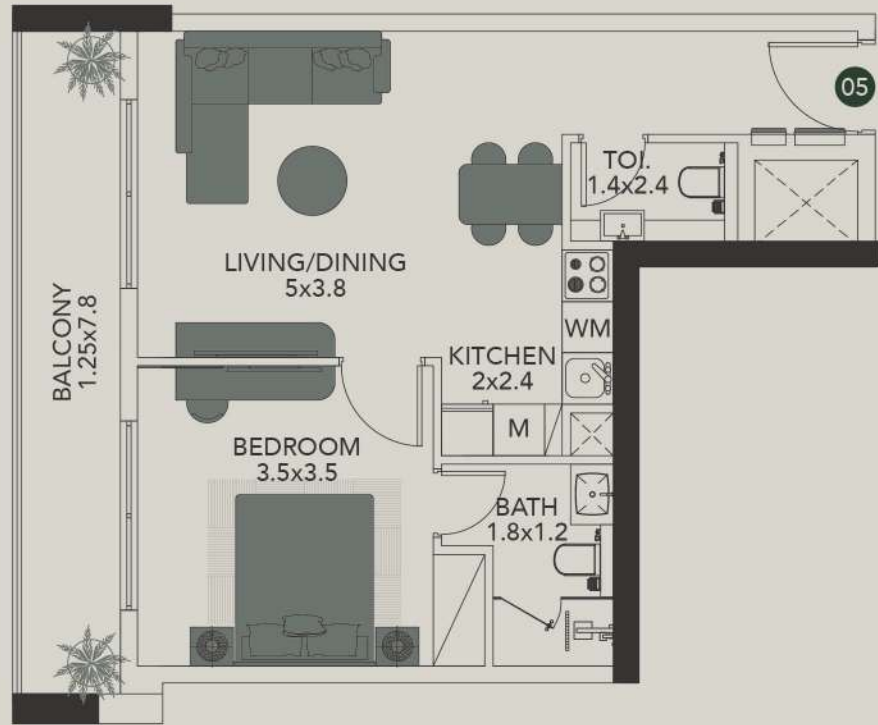
Unit-204
1 Bedroom

Internal Living Ared
381.15 sq.ft.

Level
02

Outdoor Living Area
96.34 sq.ft.

Total Living Area
477.49 sq.ft.



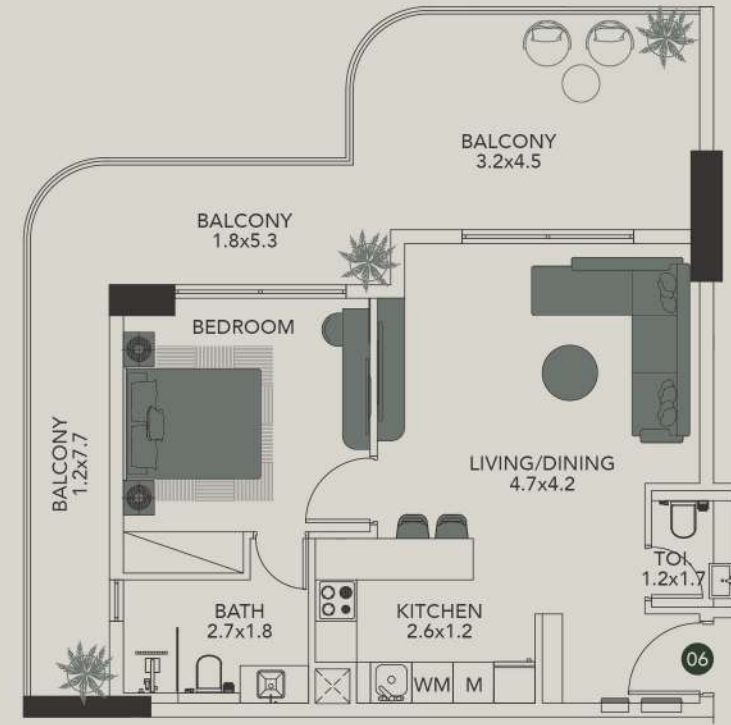
Unit-205
1 Bedroom

Internal Living Ared
532.92 sq.ft.

Level
02

Outdoor Living Area
111.08 sq.ft.

Total Living Area
644.00 sq.ft.



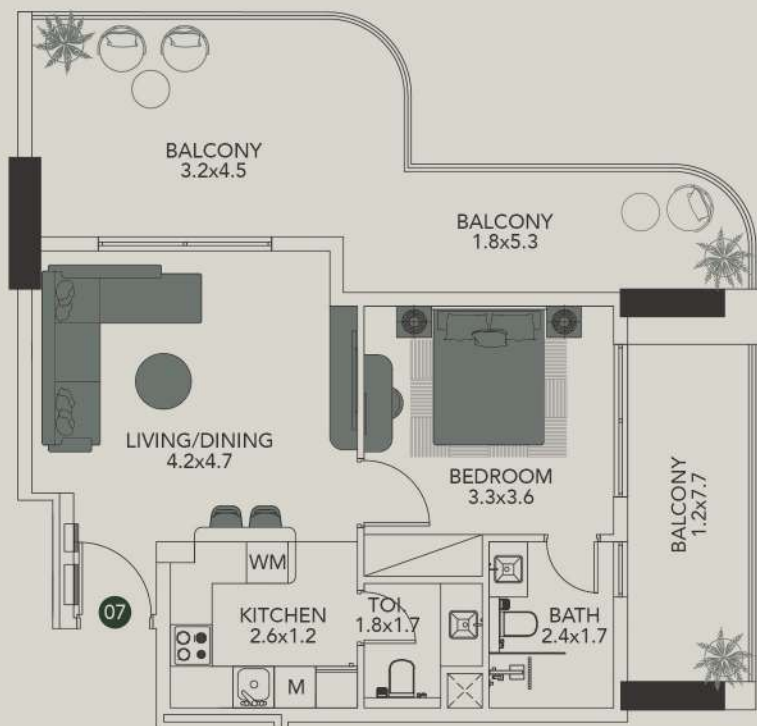
Unit-206
1 Bedroom

Internal Living Ared
608.59 sq.ft.

Level
02

Outdoor Living Area
361.45 sq.ft.

Total Living Area
970.04 sq.ft.



Unit-207
1 Bedroom

Internal Living Ared
551.54 sq.ft.

Level
02

Outdoor Living Area
412.47 sq.ft.

Total Living Area
964.02 sq.ft.



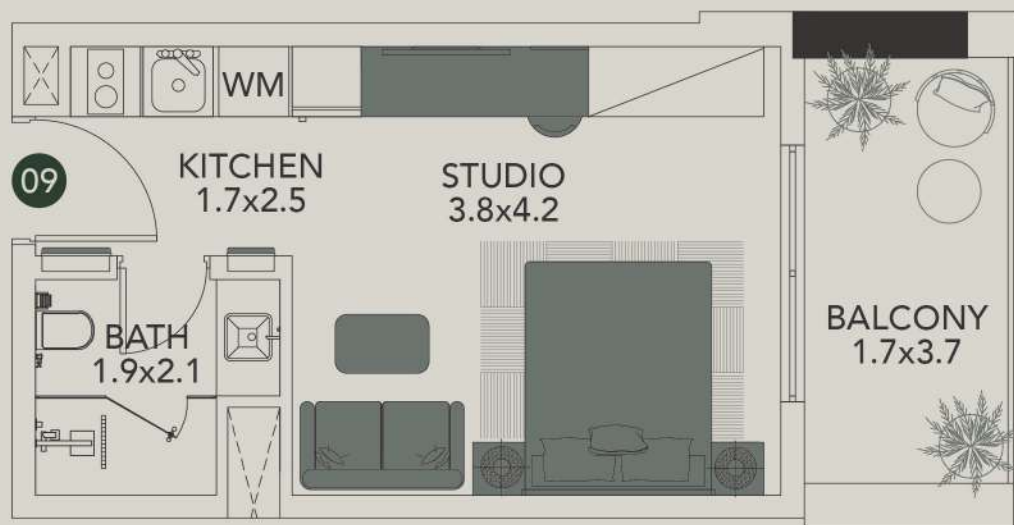
Unit-208
1 Bedroom

Internal Living Ared
524.63 sq.ft.

Level
02

Outdoor Living Area
164.90 sq.ft.

Total Living Area
689.54 sq.ft.



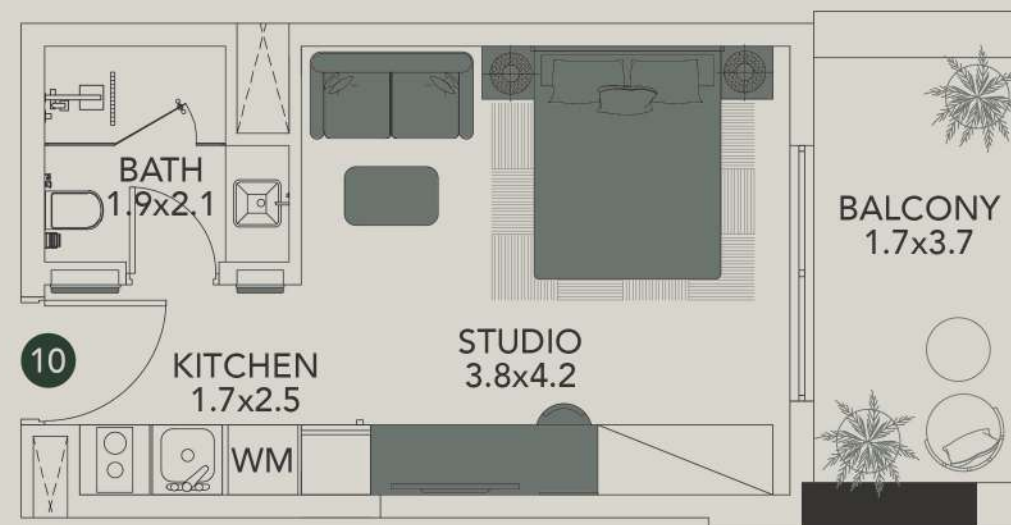
Unit-209
Studio

Internal Living Ared
280.29 sq.ft.

Level
02

Outdoor Living Area
81.81 sq.ft.

Total Living Area
362.10 sq.ft.



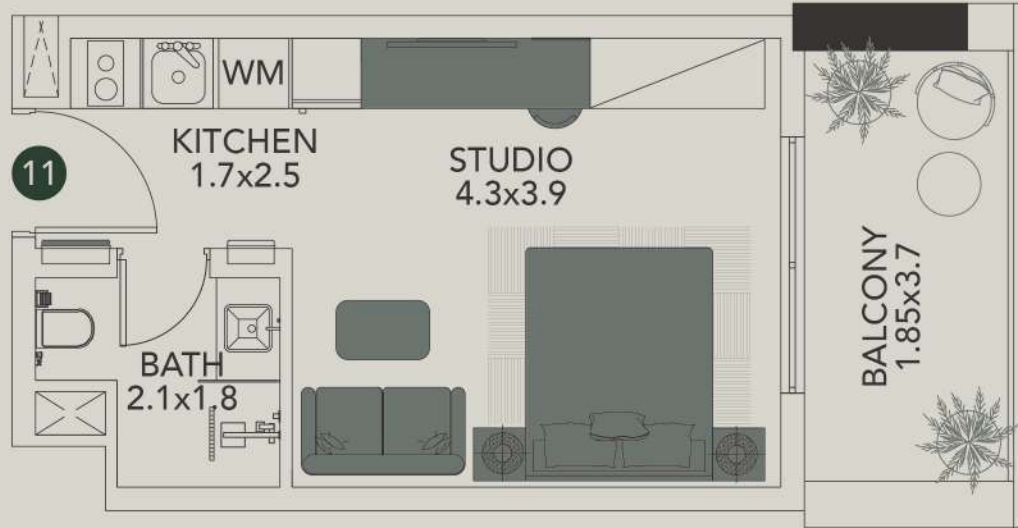
Unit-210
Studio

Internal Living Ared
280.29 sq.ft.

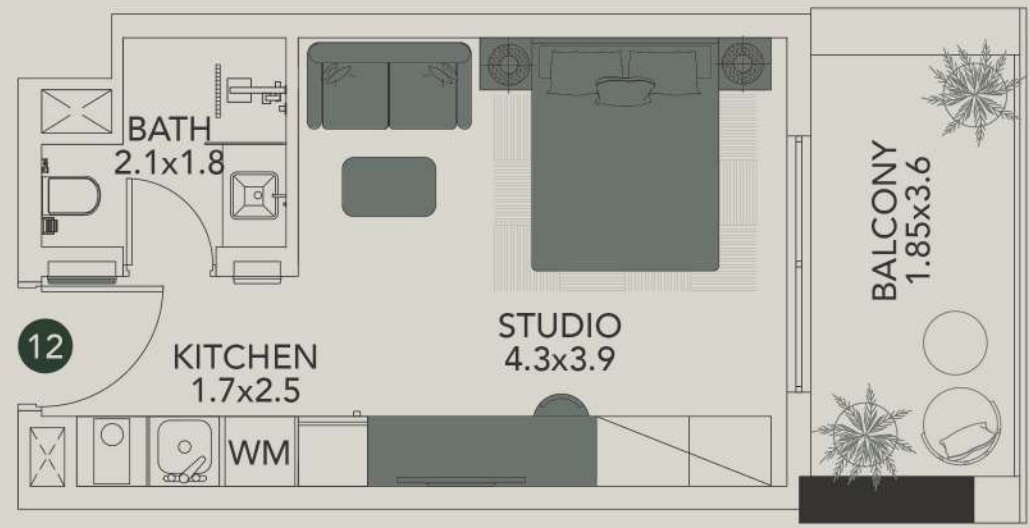
Level
02

Outdoor Living Area
81.81 sq.ft.

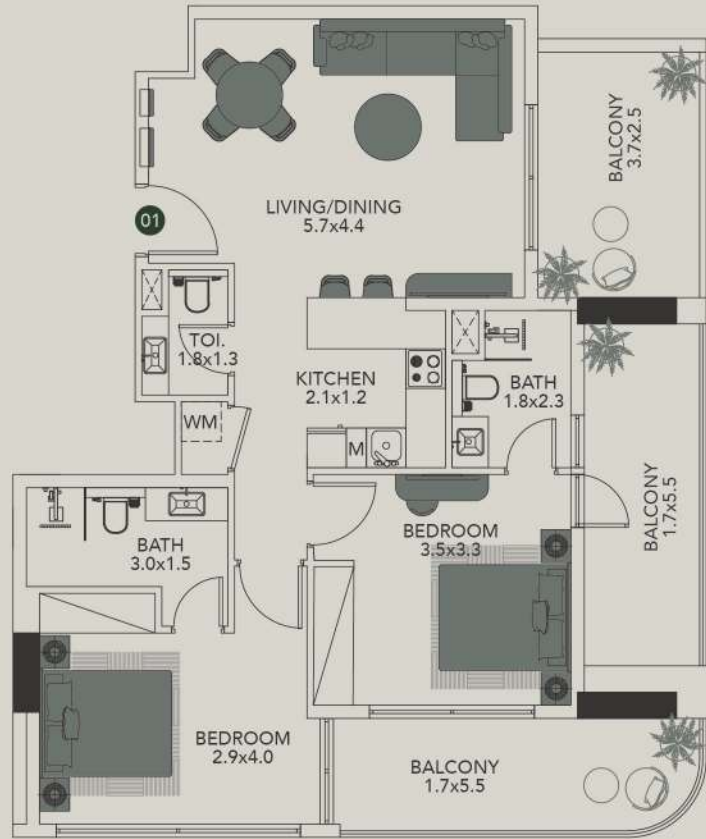
Total Living Area
362.10 sq.ft.



Unit-211	Internal Living Ared
Studio	277.39 sq.ft.
Level	Outdoor Living Area
02	82.77 sq.ft.
Total Living Area	
360.16 sq.ft.	



Unit-212	Internal Living Ared
Studio	277.60 sq.ft.
Level	Outdoor Living Area
02	81.16 sq.ft.
Total Living Area	
358.76 sq.ft.	



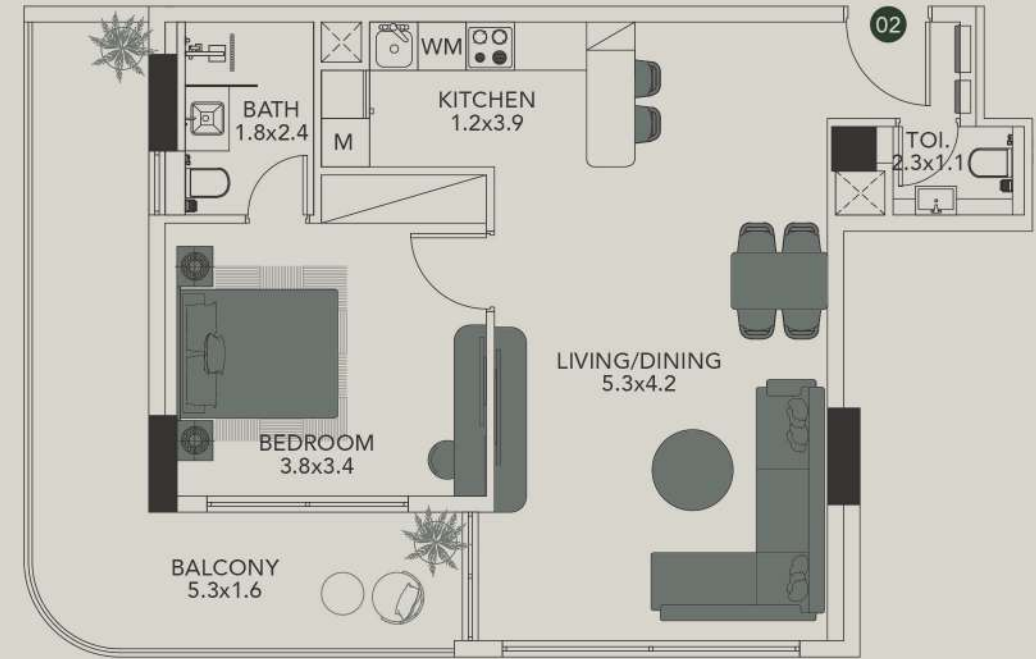
Unit-801
2 Bedroom

Internal Living Ared
854.44 sq.ft.

Level
08

Outdoor Living Area
340.89 sq.ft.

Total Living Area
1195.33 sq.ft.



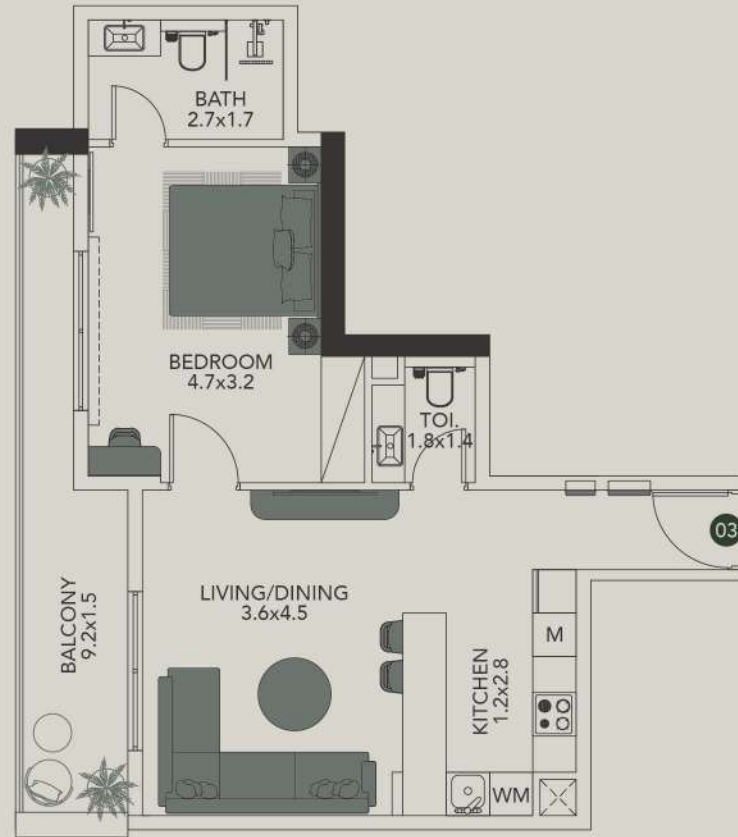
Unit-802
1 Bedroom

Internal Living Ared
694.49 sq.ft.

Level
08

Outdoor Living Area
209.25 sq.ft.

Total Living Area
903.74 sq.ft.



Unit-803
1 Bedroom

Internal Living Ared
613.11 sq.ft.

Level
08

Outdoor Living Area
121.63 sq.ft.

Total Living Area
734.74 sq.ft.



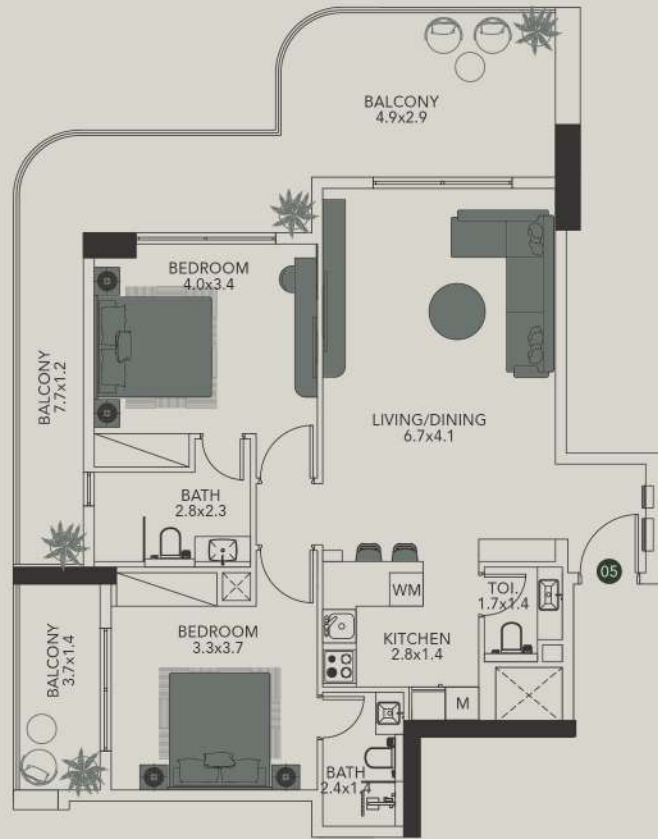
Unit-804
1 Bedroom

Internal Living Ared
658.75 sq.ft.

Level
08

Outdoor Living Area
94.18 sq.ft.

Total Living Area
752.94 sq.ft.



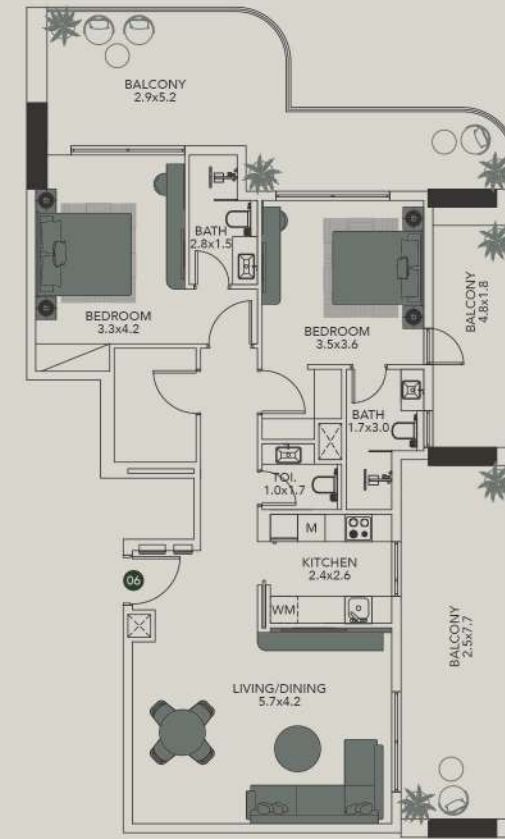
Unit-805
2 Bedroom

Internal Living Ared
944.43 sq.ft.

Level
08

Outdoor Living Area
419.25 sq.ft.

Total Living Area
1363.68 sq.ft.



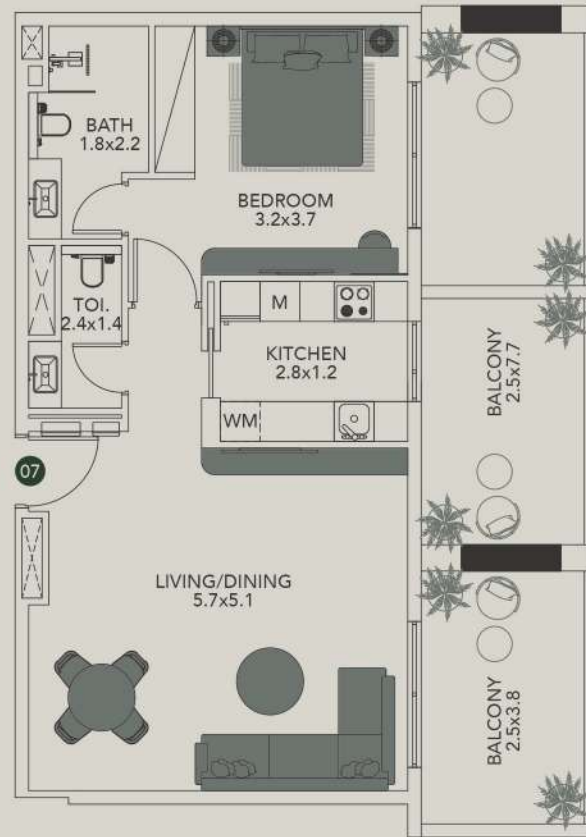
Unit-806
2 Bedroom

Internal Living Ared
1039.15 sq.ft.

Level
08

Outdoor Living Area
628.29 sq.ft.

Total Living Area
1667.44 sq.ft.



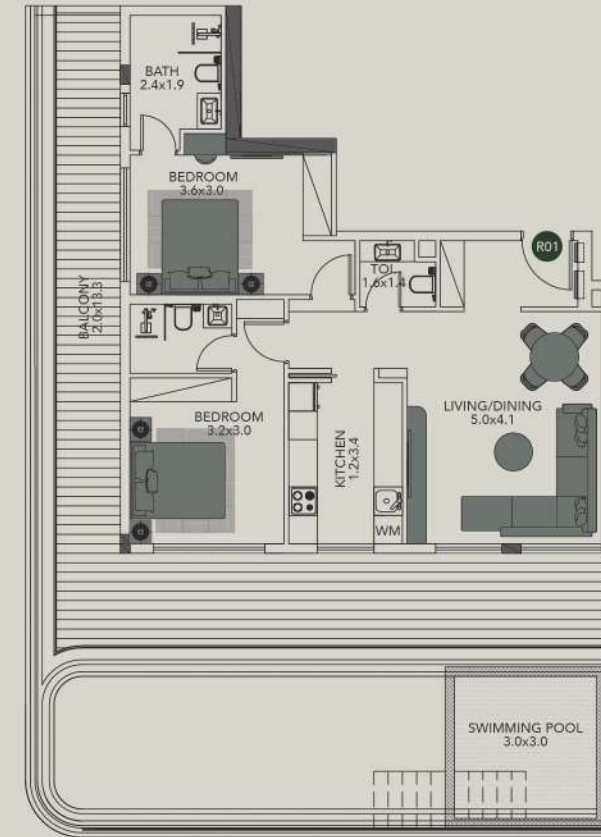
Unit-807
1 Bedroom

Internal Living Ared
726.89 sq.ft.

Level
08

Outdoor Living Area
338.09 sq.ft.

Total Living Area
1064.98 sq.ft.



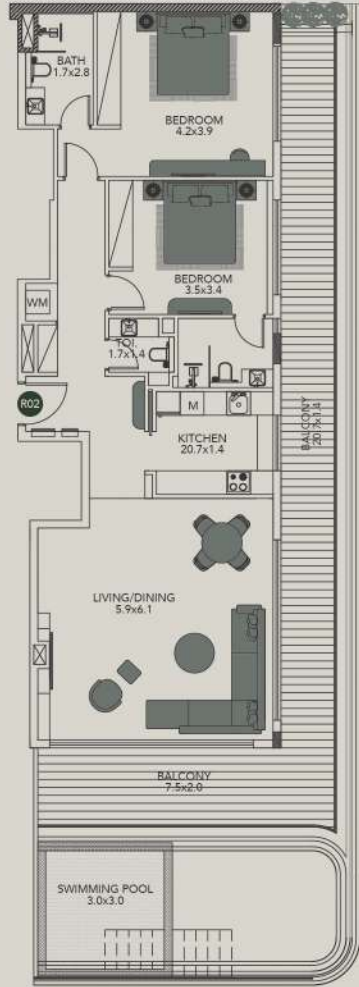
Unit-R01
2 Bedroom

Internal Living Ared
875.75 sq.ft.

Level
R

Outdoor Living Area
1029.57 sq.ft.

Total Living Area
1905.32 sq.ft.



Unit-R02
2 Bedroom

Internal Living Ared
1190.70 sq.ft.

Level
R

Outdoor Living Area
910.09 sq.ft.

Total Living Area
2100.79 sq.ft.



Unit-R03
Studio

Internal Living Ared
433.25 sq.ft.

Level
R

Outdoor Living Area
141.01 sq.ft.

Total Living Area
574.25 sq.ft.



[ADDRESS]
Sheikh Zayed Rd, Al Satwa, Dubai